



User manual



ARTHUR HOLM

DynamicDCL

Motorized lift for tabletop camera

Welcome

Thank you for purchasing an **ARTHUR HOLM** product.

Our product range has been designed to create the perfect meeting room, where the screens are a part of the interior design as well as essential communication tools

Please, read this installation and operating instructions carefully and keep them in a safe place for a future consultation

We remain at your entire disposal if you have any suggestions that would help us to improve our products

Henrik Holm
General Manager



Table of contents

APPLICATIONS	6
FEATURES	6
BOX CONTENTS	7
CONTROLS	8
CONNECTIONS	9
AHNET PROTOCOL	10
AHLINK	12

EC NORMATIVE AND SECURITY NORMS



ATTENTION: Do not disassemble or modify the device in any way

This symbol warns of the presence of dangerous un-insulated voltages inside some of the components, of sufficient magnitude to expose people to risk of electronic shock



This symbol draws attention to important use and maintenance instructions in the manual that accompanies the unit



This symbol indicates that the equipment conforms to the norms established by European community

Safety instructions

Plugs

Do not dismantle any part of the equipment power connector
Disconnect the power plug from the AC outlet when the equipment is not going to be used for an indefinite period of time

Power and extensions cords

Use the appropriate power cord with the correct plug type

Do not overload wall outlets or power cords

Make sure the total ampere passed through an extension cord does not exceed the maximum allowed by the cable used

Do not place anything on the power cord

Do not locate this product where a person may walk or trip over the cord



Wiring connected to hazardous voltage requires installation by qualified personnel or the use of ready-made flexible cables



For your security, your equipment must be connected to an electrical outlet with grounding connection protection

The operating electrical outlet must be in an easily accessed place

Environment

Install the equipment on an elevated, flat surface

Install the equipment in a ventilated area

Avoid exposing the equipment to:

- Rain or water
- Excessive heat, cold or humidity
- Areas exposed to direct sunlight
- Dirty areas
- Equipment generating strong magnetic fields

Avoid placing open containers of liquid, near the equipment

Keep a minimum distance of 30mm in order to have good ventilation

Never place any source of flames such as lighted candles, etc above the device

If you are using the device in extreme weather conditions and / or tropical climates, the equipment should be installed in a room which ensures a reasonable level of temperature and humidity

To prevent damage the equipment must be firmly anchored to the surface, as shown in the installation instructions

This equipment has been tested and found to comply with the limits for a Class B digital device, pursuant to part 15 of the FCC Rules. These limits are designed to provide reasonable protection against harmful interference in a residential installation. This equipment generates, uses and can radiate radio frequency energy, and if not installed and used in accordance with the instructions, may cause harmful interference to radio communications. However, there is no guarantee that interference will not occur in a particular installation. If this equipment does cause harmful interference to radio or television reception, which can be determined by turning the equipment off and on, the user is encouraged to try to correct the interference by one or more of the following measures:

- Reorient or relocate the receiving antenna.
- Increase the separation between the equipment and receiver.
- Connect the equipment into an outlet on a circuit different from that to which the receiver is connected.
- Consult the dealer or an experienced radio/TV technician for help.

Applications

The DynamicDCL is a motorized camera lift system for Neat Center that has been designed to hide table cameras when not in use.

Table cameras often cover all the people at the table and are therefore, located in a central position on the table.

The up and down movement can be controlled remotely via RS422 or locally on the device.

The DynamicCL has the well-known Arthur Holm build quality with a smooth and almost silent movement of the camera. It has a brushed stainless steel cover plate with a capacitive touch button to control the up and down motion.

Features

The motorized camera lift system shall retract the camera when not in use. The movements of the motorized camera lift shall be controlled remotely via RS422 or locally on the device.

The lift shall provide a brushed stainless steel cover plate with a capacitive touch button to control the up and down motion.

Box contents

Before the installation of your DynamicDCL, please check the contents of the shipping carton, it must contain the following items:

- DynamicDCL
- Power cord
- User's Manual
- Power supply 100-240Vac, 50-60Hz. Output 12V



CAUTION: Never use this equipment on horizontal position

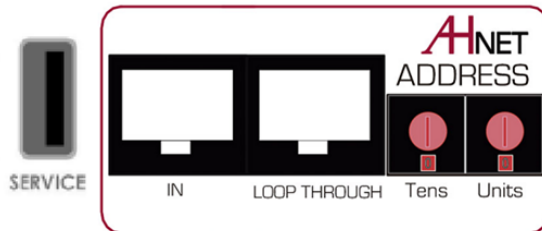
Controls

On the upper cover plate, there is a button to control the open and close motorized system



1. UP/DOWN: Controls the elevation and retraction of the lift system. Press this button during 5 seconds to activate AHlink signal (5 beeps sounds when AHlink signal is activated)

Connections



- AHnet: RJ45 CAT6 connector for addressable RS422 control. There is a loop through connector to use as signal RS422 output. You can connect up to 30 units on the same RS422 bus.
- TERMINATION: Active only the RS422 bus termination on the last unit of the bus.
- SERVICE: USB only for service.

AHnet protocol

- Communication type : RS422
- Connection type : RJ45
- Wiring type : CAT-6
- Speed and configuration :
 - Baud Rate = 38400
 - Data Bits = 8
 - Parity = None
 - Stop Bits = 1

Wiring diagram



RJ-45

- 1- Data TX+
- 2- Data TX-
- 3- Data RX+
- 4- NC
- 5- NC
- 6- Data RX-
- 7- NC
- 8- NC

Pins 1&2: the units answer

Pins 3&6: the units receive orders

Protocol to control the device by addressable RS422 bus. You can connect up to 30 devices on the same RS422 bus. You can use a AH Interface Ethernet, to control the RS422 bus. The units should have set address, and the address must start by 1. Maximum cable length between ends, 500m.

AHnet Protocol:

Using 5 bytes to communication:

BYTE 0	START BYTE
BYTE 1	ADDRESS BYTE
BYTE 2	COMMAND BYTE
BYTE 3	VALUE 1
BYTE 4	VALUE2

Commands:

COMMAND	DESCRIPTION	RESPONSE
FA XX 01 01 00	OPEN	FB XX 01 01 00
FA XX 01 00 00	CLOSE	FB XX 01 00 00
FA XX 04 01 00	BUTTON LOCKED	FB XX 04 01 00
FA XX 04 00 00	BUTTON UNLOCKED	FB XX 04 00 00
FA XX 14 00 00	INQUIRY CONTROL BYTE	FB XX 14 CB1 CB2

XX: Number of the DynamicMC address. Up to 30 units for each RS422 BUS.

CB1: Response in 8 bites of the device status

CB2: Not implemented

CB1:

BIT 0	TOP POSITION
BIT 1	DOWN POSITION
BIT 2	
BIT 3	BUTTON LOCKED (1)
BIT 4	
BIT 5	
BIT 6	
BIT 7	(1) FAILURE IN THE SYSTEM

To send an order to all the devices, you must use the address:

F7 Hex. (Byte1)

In this case, the units do not respond Use shielded (FTP) RJ45 cables for RS422 BUS.

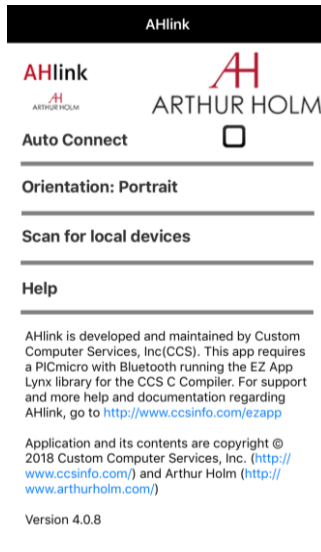
AHlink

The AHlink is used to control and configure the unit

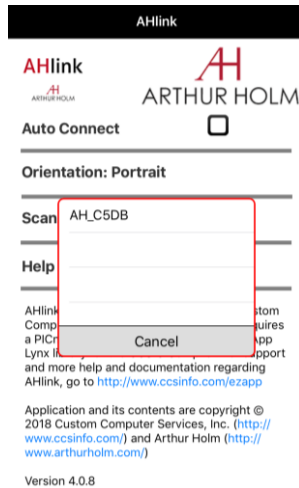
By default, the AHlink signal on the unit is deactivated. To activate the AHlink signal, press during 5 seconds the Up and Down control button located on cover plate.

The unit automatically deactivate the AHlink signal if there is no device (mobile or tablet) connected more than 2 minutes. When the AHlink signal is deactivated, the AHlink is not more available on the unit

To control and configure the unit using AHlink, download "AHlink" from App Store (IOS system) or from Google Play (Android system). The App is free. Execute the "AHlink" on your mobile phone



On App options, is recommended not select "Auto Connect" and select "Portrait" on "Orientation". To connect to the device, selects "Scan for local devices"



If the device does not appear on the window, the AHlink signal is not active. To activate, press during 2 seconds the Up and Down button located on cover plate



Selecting the device, the first page is upload on the mobile phone. This page is used to check the device and for basic configuration on installation process

Arthur Holm

connected to AH_6789



AHDCL

Serial: 0123456789

Ver: 1.0

Control

MOV

OPEN

CLOSE

Command: 00:00:00:00:00



S1



S2



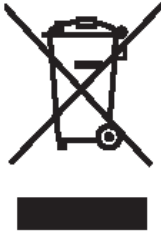
S3

AHNet Address: 98

Position: 0

PASSWORD: 0

Information on Disposal for Users of Waste Electrical & Electronic Equipment



This symbol on the products and/or accompanying documents means that used electrical and electronic products should not be mixed with general household waste

For proper treatment, recovery and recycling, please take these products to designated collection points, where they will be accepted on a free of charge basis. Alternatively, in some countries you may be able to return your products to your local retailer upon the purchase of an equivalent new

product

Disposing of this product correctly will help to save valuable resources and prevent any potential negative effects on human health and the environment which could otherwise arise from inappropriate waste handling. Please contact your local authority for further details of your nearest designated collection point

Penalties may be applicable for incorrect disposal of this waste, in accordance with national legislation

For business users in the European Union

If you wish to discard electrical and electronic equipment, please contact your dealer or supplier for further information

Information on Disposal in other Countries outside the European Union

This symbol is only valid in the European Union

If you wish to discard this product, please contact your local authorities or dealer and ask for the correct method of disposal

PRODUCT GUARANTEE

Conditions of Guarantee

Albiral Display Solutions S.L., with this document, guarantees all Albiral and Arthur Holm Trademark products against defects in manufacturing in accordance with the following conditions:

- 1) This guarantee covers the original product purchaser for a period of 24 months from the date of purchase
- 2) This guarantee covers:
 - a) Parts: During the warranty period, the replacement of any electronic and mechanical parts against any defects in manufacturing. The guarantee does not cover any faulty electronic and/or mechanical components arising from incorrect installation, non-authorised modification, and inadequate transport or as a result of atmospheric phenomenon
 - b) Labour: Albiral Display Solutions S.L covers labour costs for replacement of any defective parts (in accordance to paragraph 2a) during the period of this warranty
 - c) Transport costs:
 - i) In the case that a manufacturing defect occurs within 30 days after the purchase date, both freight and insurance will be paid by Albiral Display Solutions, S.L.
Although Albiral Display Solutions S.L pays for transport and insurance cost, Albiral Display Solutions, S.L. will not be responsible for the damages caused by transport if the customer does not inform in writing when receiving the goods
 - ii) After 30 days of the purchase date, both freight and insurance costs will be paid by the customer
 - d) Albiral Display Solutions S.L. will not be responsible for the damages caused by transport, when this is paid by customer
 - e) The guarantee is not valid if persons other than authorised service Centre have handled the product and if the product has been manipulated
 - f) The beneficiary of the Guarantee will have to send the devices with the original packaging or an appropriate one to guarantee there are no damages during the transport
 - g) The guarantee is not valid if the customer does not include ***RMA form and copy of the purchasing invoice***
- 3) Albiral Display Solutions S.L. recognized all guaranteed user rights by all legal rules from its region, and in the absence of them, all established consumer rights by general law 26/84

CONTACT YOUR AUTHORISED DISTRIBUTOR



ARTHUR HOLM

Albiral Display Solutions SL
Fàtima, 25
Sant Hipòlit de Voltregà
08512 Barcelona – Spain
tel: +34 93 850 23 76 / 23 83
fax: +34 93 850 25 50
web: www.arthurholm.com
e-mail: marketing@arthurholm.com

This manual can be modified without previous notice.

Arthur Holm is a registered brand by Albiral Display Solutions SL.

Albiral
Display
Solutions **20th** anniversary
albiral.com
marketing@albiral.com
arthurholm.com